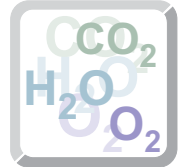




# $\lambda T$ Lambda T

## CO<sub>2</sub> Monitor/Controller



Continuous CO<sub>2</sub> monitoring and control

High performance NDIR optical bench

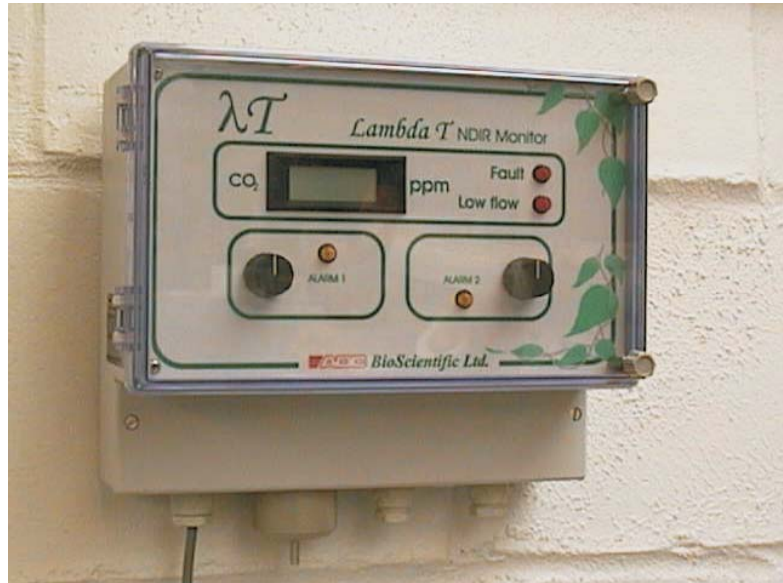
Easy maintenance

Integral sample pump

Two relay trip points

Digital display

Temperature corrected



# $\lambda T$

**Lambda T** is a high accuracy CO<sub>2</sub> monitor employing a novel twin wavelength, non-dispersive, infra-red, optical technique. This highly stable analysis allows the  $\lambda T$  to be used for unattended measurement and control of Carbon dioxide in greenhouses, growth cabinets and any application where elevated levels of the gas are required.

### Novel Twin Wavelength Detection System

The  $\lambda T$  uses a new, two filter, matched twin element detection system. This technique has many benefits over traditional single wavelength infra-red monitors.

- Gas specific, no cross sensitivity with other gasses.
- Unrivalled long term measurement stability.
- Reliable and robust.
- No interaction with the gas being measured and so do not consume anything from the sample.

### Versatile Operation

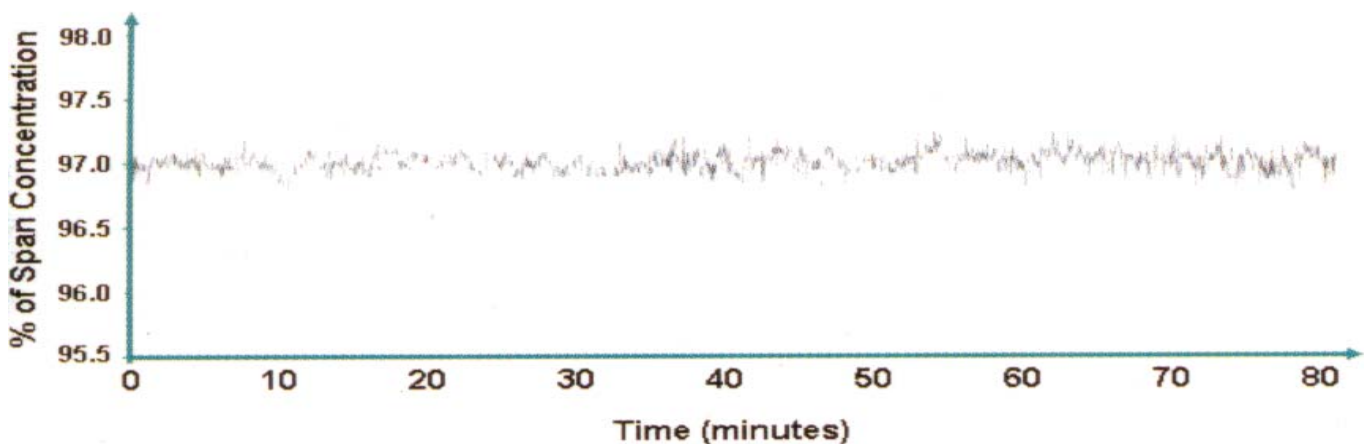
With an onboard sample pump,  $\lambda T$  is ready to be wall or front panel mounted. Operating on 88-138VAC or 172-276VAC,  $\lambda T$  can be online and monitoring in minutes.

### Easy Maintenance

The  $\lambda T$  is easily maintained requiring only a few minutes to replace the hydrophobic filter and a simple calibration procedure to check the accuracy, typically once a year.

# Specifications

<b>CO<sub>2</sub> Ranges:</b>	0-2000ppm 0-3000ppm 0-1% 0-3% 0-5% 0-10% 0-30% 0-100%	<b>Alarms:</b>	Two user-configurable single pole trip points over the full scale range with LED display indicator.
<b>Accuracy:</b>	+/- 2% of FSD	<b>Outputs:</b>	4-20mA or 0-20mA Linear or non Linear Voltage free changeover relay contacts for both alarms. (8A 240V AC non-inductive).
<b>Stability:</b>	+/- 2% of FSD over 12 months	<b>Operating temperature Range:</b>	0 to 40°C
<b>Repeatability:</b>	+/- 0.3% of FSD at zero	<b>Gas connections:</b>	Push-on connectors for 4mm bore tubing.
<b>Response times</b>		<b>Enclosure:</b>	IP54 rated.
<b>Electrical:</b>	1second	<b>Power requirements:</b>	172 to 276VAC or 88 to 138VAC switchable 13Watts typical
<b>Gas, from Inlet:</b>	Typically < 30 seconds to 90% of signal	<b>Dimensions:</b>	267mm x 258mm x 148mm
<b>Warm-up time:</b>	Operational 3 min, full specification 30mins	<b>Weight:</b>	2.5Kg
<b>Pump:</b>	Mounted internally 1Lmin <sup>-1</sup> 30Meter maximum sample distance		
<b>Display:</b>	Digital readout, 4 digit, 7 segment, high contrast LCD		
<b>Front panel indicators:</b>	Gas reading Flow fail warning Alarm trip indicators Fault indicator.		



1st Floor Charles House, Furlong Way, Great Amwell, Herts SG12 9TA, UK  
 Tel:+44(0)1920 487901 Fax:+44(0)1920 466289  
 Email: sales@adc.co.uk Website:http://www.adc.co.uk

