

Help me with...



All Categories > Quick Start > Getting Started

Getting Started

- i** This quickstart guide will show you how to sign-up for an account, create your first organization, and add a device.

- 1 In your browser navigate to zentracloud.com

ZENTRA Cloud

Keep track of your environmental data with ZENTRA Cloud.

By using ZENTRA Cloud and all of its features you, the user, must agree to the [Terms and Conditions](#).

Sign up

Already Registered?

Email address

Password

Forgot your password?

Sign in

- 2 Enter your user information and accept the Terms and Conditions.

☒ I accept the [Terms and Conditions](#). *

Sign up

- 3 You will receive an email from alerts@zentracloud.com

- ❗ Check your spam box if you do not see this email within a few minutes of signing up, or contact our support team at support.environment@metergroup.com



METER

Welcome to ZENTRA Cloud!

Thank you for registering with us. Let's get started! Please verify your account [here](#).

If you are having any issues, please contact us at the email below.

Thank you,

The ZENTRA Cloud Team

- 4 The first screen you see will be setting up your organization or accepting an invite from a colleague. If you were expecting an invite from a colleague click **Check for Invites**, otherwise click **Create Organization**.

⚙️ Setup New Organization

Do you own ZENTRA loggers that you would like to manage through ZENTRA Cloud? A ZENTRA Cloud organization allows you to group loggers in a way that makes sense to you and your business. Click below to get started.

Create Organization

🔗 Join Existing Organization

Did someone invite you to a ZENTRA Cloud organization? If so, click below to accept your invitation. If you don't already have an invite, contact the organization owner and ask them to invite you.

Check for Invites

- 5 Select **Create Organization**. Enter a name for the organization and select your role.

New Organization

Organization Information

Organization Name*

Organization Membership

My Role in the Organization*

Select a Role

Cancel

Accept

- 6 A default **Site** and **Plot** are added with every new organization. To re-name the site and plot, click the **Pencil** to the right of the name.

 Site

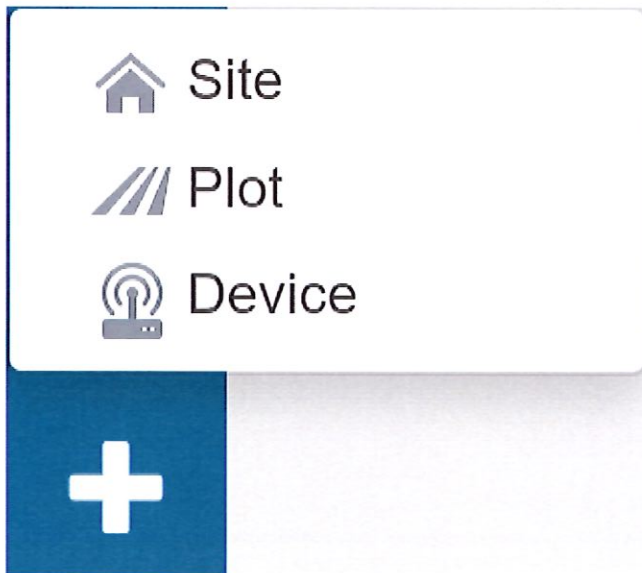


 Plot



- 7 To add a new **Site**, select the plus icon in the lower left and click Site.

 A **Site** can contain one or more **Plots**.



- 8 Enter a name for the site and click **Create**.

A screenshot of a 'New Site' form. The form has a title bar 'New Site' with a close button (X). Below the title bar is a section titled 'Site Information'. Inside this section is a text input field labeled 'Site Name *'. At the bottom right of the form are two buttons: 'Cancel' and 'Create'.

- 9 To add a new **Plot**, select the plus icon in the lower left and click Plot. Select which Site to associate the plot with.

i A **Plot** can contain one or more loggers.

New Plot

Plot Information

Parent Site *

Choose Parent

Plot Name *

Unnamed Plot

Crop Information

Crop Type

Select a Crop Type

Planting Date

Additional Information

Acreage (ha)

acreage in hectares (ha)

Soil Texture

Select a Soil Type

Responsible Person

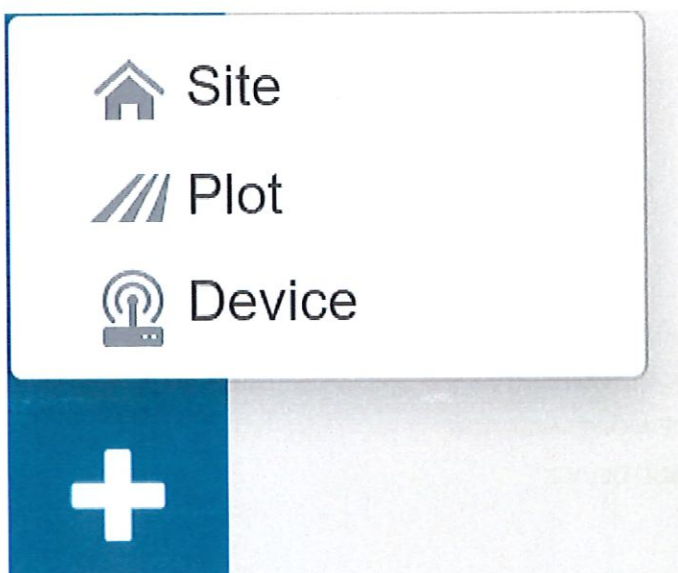
Select Responsible User

Notes

Cancel

Create

- 10 To add a new data logger select the plus icon in the lower left and click **Device**.



- 11 Enter the logger **Serial Number** and **Device Password** as shown on the device subscription card. Choose the **Site** and **Plot**, then click **Create**, to add the device.

Add Device

Please enter the device data from the orange card found inside the device case.

Device Information

Device Serial Number *

Device Password *

Device Hierarchy *

Select a Site

/

Select a Plot

Cancel

Create

HOW DID WE DO?



RELATED ARTICLES

DEVICE INVENTORY

CREATE NEW ORGANIZATION

ADD DEVICE



Help me with...



All Categories > Devices > Device Inventory

Device Inventory

Manage device assignments with the inventory page by simply moving devices between organizations without re-entering device serials or device passwords.

- A user must be an **Admin**, and a **Member** of the associated organizations in order to move devices between them.

Inventory

- Click the **Device** icon from the menu on the left.
- Select **Inventory**.
- Select the **Org, Site** and **Plot**.
- Click **Update** to move the device.

ZENTRA Cloud Organization: **METER Group, Inc. U...** travis.bates@metergroup.com

Site

Group I

06-01179

06-01572

WX-31

Group II

Group III

Group IV

API

+ Add new...

06-01179 EM60G Updated 43 weeks ago

Port 1	24 in TEROS 12	Water Content 18.0%	Soil Temperature 39.7 °F	Bulk EC 0.081 mS/cm
Port 2	14 in TEROS 12	Water Content 21.0%	Soil Temperature 40.1 °F	Bulk EC 0.120 mS/cm
Port 3	4 in TEROS 12	Water Content 19.7%	Soil Temperature 40.8 °F	Bulk EC 0.027 mS/cm
Battery	Battery Percent 100%	Battery Voltage 6598 mV		
Barometer	Reference Pressure 97.52 kPa	Logger Temperature 57.2 °F		

06-01572 EM60G Updated 43 weeks ago

Port 1	24 in TEROS 12	Water Content 30.8%	Soil Temperature 39.8 °F	Bulk EC 0.070 mS/cm
Port 2	14 in TEROS 12	Water Content 33.8%	Soil Temperature 40.3 °F	Bulk EC 0.100 mS/cm
Port 3	4 in TEROS 12	Water Content 34.0%	Soil Temperature 42.5 °F	Bulk EC 0.131 mS/cm

HOW DID WE DO?



RELATED ARTICLES

GETTING STARTED

ADD DEVICE

REMOVE DEVICE



Help me with...

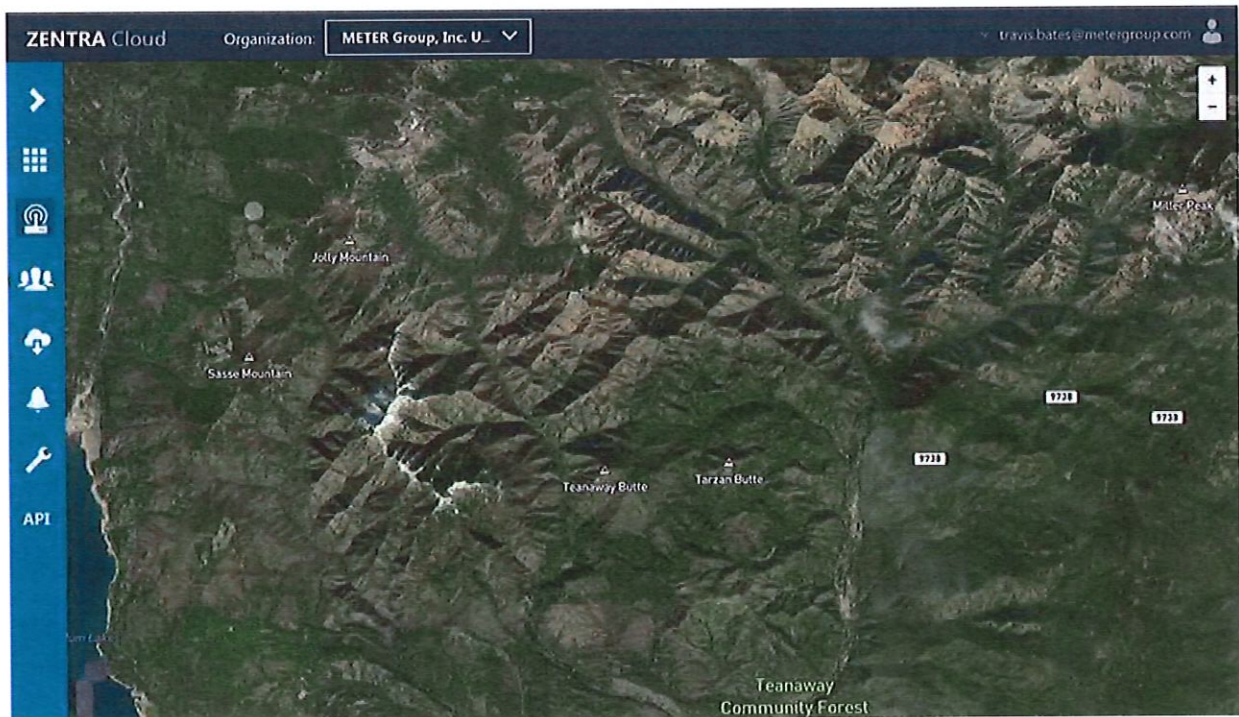


All Categories> Devices> Remove Device

Remove Device

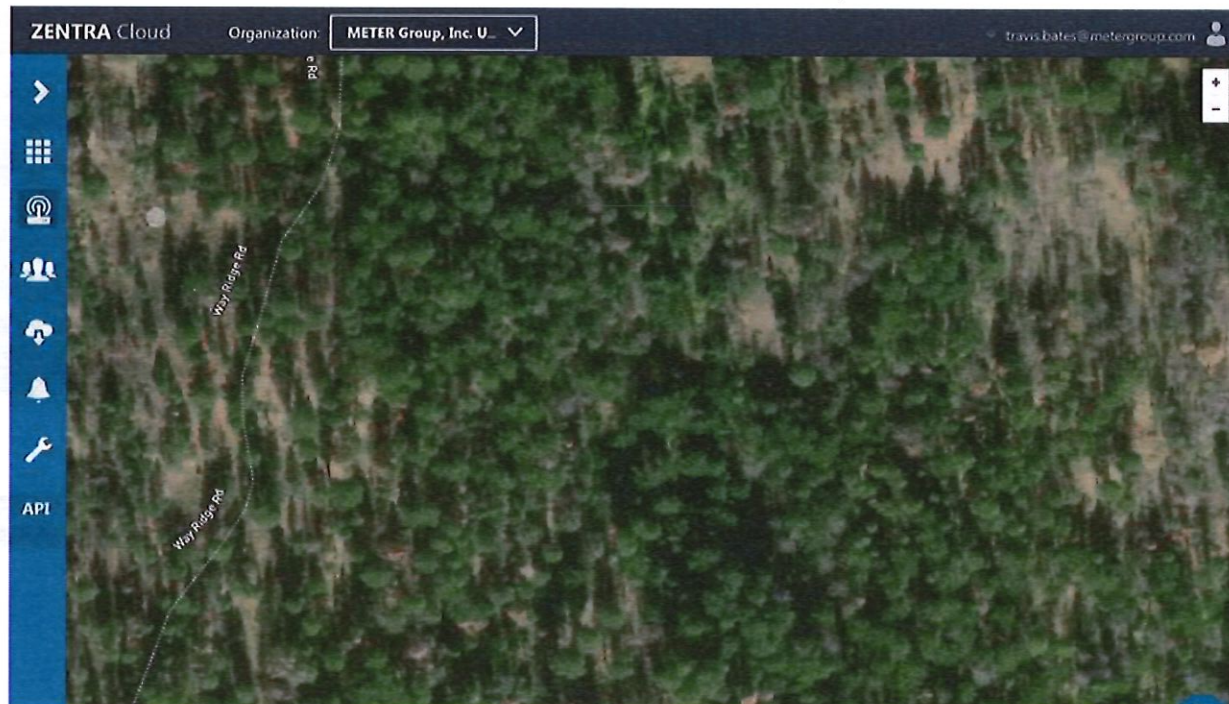
Remove Device

- Open the device tree.
- Click the **Gear** icon on the device.
- Click the **Red** unsubscribe button.
- Confirm that you want to **Unsubscribe** the device.



Remove Device

- Click the device icon from the main menu.
- Select **Device Configuration**.
- Select the desired device from the device tree.
- Click the **Red** unsubscribe button.
- Confirm that you want to **Unsubscribe** the device.



HOW DID WE DO?



RELATED ARTICLES

[ADD DEVICE](#)

[DEVICE INVENTORY](#)

[EDIT DEVICE](#)





All Categories > Devices > Edit Device

Edit Device

Table of Contents

- ☐ DEVICE IDENTITY.
- ☐ MEASUREMENT CONFIGURATION
- ☐ COMMUNICATION SETTINGS
- ☐ GPS LOCATION
- ☐ DEVICE LOGS

The Device Configuration page has five tabs:

- 1 **Device Identity**
- 2 **Measurement Configuration**
- 3 **Communication Settings**
- 4 **GPS Location**
- 5 **Device Logs**

DEVICE IDENTITY.

Click the **Edit Device Identity** button to edit the **Device Hierarchy**, and or **Device Name**. Other fields may only be viewable depending on the device.

ZENTRA Cloud

Organization: METER Group, Inc. ...

zc_support@metergroup.com

Device Identity

Measurement Configuration

Communication Settings

GPS Location

Device Logs

Device Information

Device Hierarchy

Device Name

Device Height (cm)

Device State

Device Type

Serial Number

Firmware Version

Battery Chemistry

Block 650 / ROW 15

z6-00923 Canopyi

Not Set

Active (Device will upload data)

ZL6

z6-00923

1.11

Set to Unknown

?

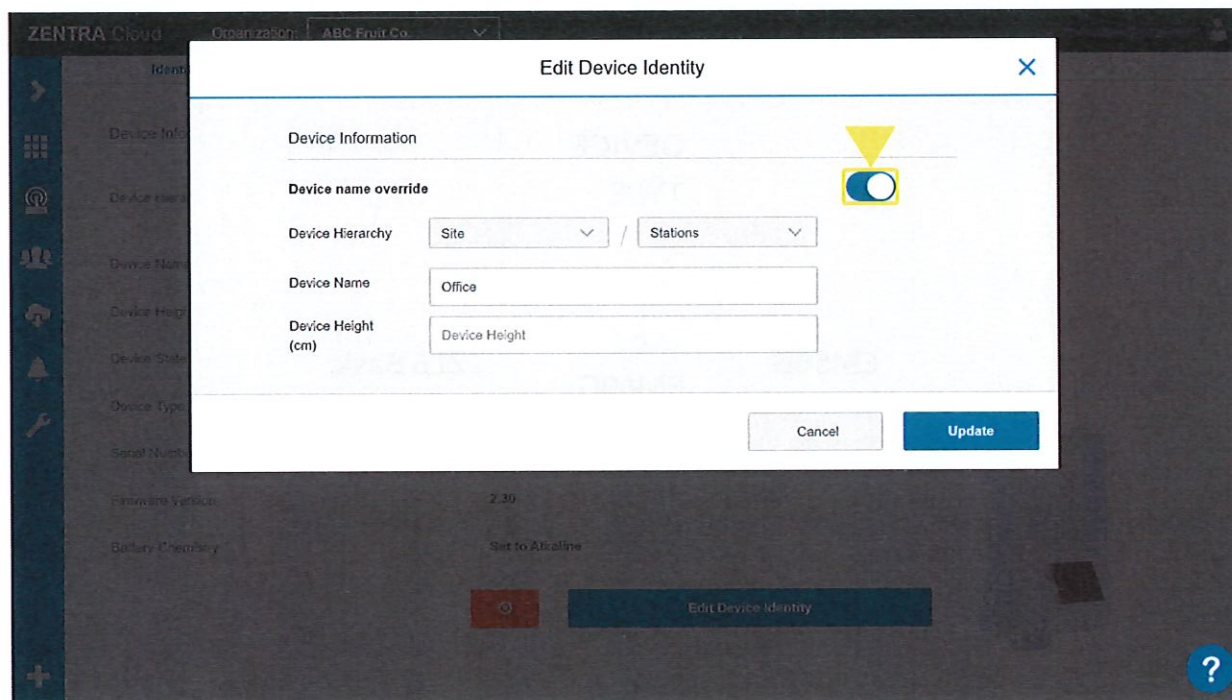
Edit Device Identity

The table below lists by device type the fields that can be edited on the Device Identity tab.

FEATURE		DEVICE TYPE	
	EM50G	ZL6 / EM60G / ATMOS 41W	ZL6 Basic
Device Hierarchy	View / Edit	View / Edit	View / Edit
Device Name	View / Edit	View / Edit	View / Edit
Device Height	View / Edit	View / Edit	View / Edit
Device State	View Only	View / Edit	View Only

Device Type	View Only	View Only	View Only
Serial Number	View Only	View Only	View Only
Firmware Version	View Only	View Only	View Only
Battery Chemistry	View Only	View Only	View Only

To edit the **Device Name** or **Device Height** you must toggle the **Device name override** to On. This will allow ZENTRA Cloud to override what is reported for Name and Height by the device.



MEASUREMENT CONFIGURATION

Click the **Edit Measurement Configuration** button to edit the **Measurement Interval**, **Port Settings**, **Sensor Calibration**, and sensor **Installation Height/Depth**. Some fields may only be viewable depending on the device.

ZENTRA Cloud

Organization:

METER Group, Inc. ...

zc_support@metergroup.com

Device Identity

Measurement Configuration

Communication Settings

GPS Location

Device Logs

08-02109 / 08-02109

Measurement Settings

Measurement Interval

15 minutes

Power Noise Filter

60 Hz

Port Settings

Port 1

TEROS 12
Moisture/Temp/EC

Calibration
Mineral

Height/Depth
61 cm

Firmware
1.02

S.N.
T12-00004060

Status
✓

Port 2

TEROS 12
Moisture/Temp/EC

Calibration
Mineral

Height/Depth
36 cm

Firmware
1.02

S.N.
T12-00004086

Status
✓

Port 3

TEROS 12
Moisture/Temp/EC

Calibration
Mineral

Height/Depth
10 cm

Firmware
1.02

S.N.
T12-00004081

Status
✓

Port 4

None Selected

The table below lists by device type the fields that can be edited on the Measurement Configuration tab.

FEATURE		DEVICE TYPE		
	EM50G	ZL6 / EM60G	ZL6 Basic	ATMOS 41W
Measurement Interval	View Only	View / Edit	View Only	View / Edit
Power Noise Filter	View Only	View / Edit	View Only	View / Edit
Sensor Type	View Only	View / Edit	View Only	N/A

Calibration Values	View / Edit	View / Edit	With Subscription	N/A
Height/Depth	View / Edit	View / Edit	With Subscription	View / Edit

COMMUNICATION SETTINGS

Click the **Edit Communication Settings** button to edit the device **Upload Times** and **Upload Frequency**. Some fields may only be viewable depending on the device.

ZENTRA Cloud

Organization: METER Group, Inc. ...

zc_support@metergroup.com

Device Identity

Measurement Configuration

Communication Settings

GPS Location

Device Logs

The hourglass icon indicates that a measurement or setting has been set on ZENTRA Cloud and is awaiting a notification that the change has been confirmed by the device.

03-02-09 / 03-02-09

Data Upload Frequency

Upload Frequency

One upload per selected hour.

Data Upload Times

AM

PM

Cellular Configuration

The table below lists by device type the fields that can be edited on the **Communication Settings** tab.

FEATURE		DEVICE TYPE	
	EM50G	ZL6 / EM60G / ATMOS 41W	ZL6 Basic

Upload Times	View Only	View / Edit	N/A
Upload Frequency	View Only	15-Minute Data Subscription Required	N/A
APN	View Only	View Only	N/A
Module Type	View Only	View Only	N/A
SIM Number	View Only	View Only	N/A

GPS LOCATION

Some devices automatically report their lat and long location and altitude. For devices that do not these values must be manually entered.

ZENTRA Cloud Organization: **METER Group, Inc. ...**

Device Identity | Measurement Configuration | Communication Settings | **GPS Location** | Device Logs

GPS Location

Latitude: 47.0920752

Longitude: -119.945524

Altitude: 409 m

Fix accuracy: 800

Fix timestamp: 1614845279

Number of satellites: 12

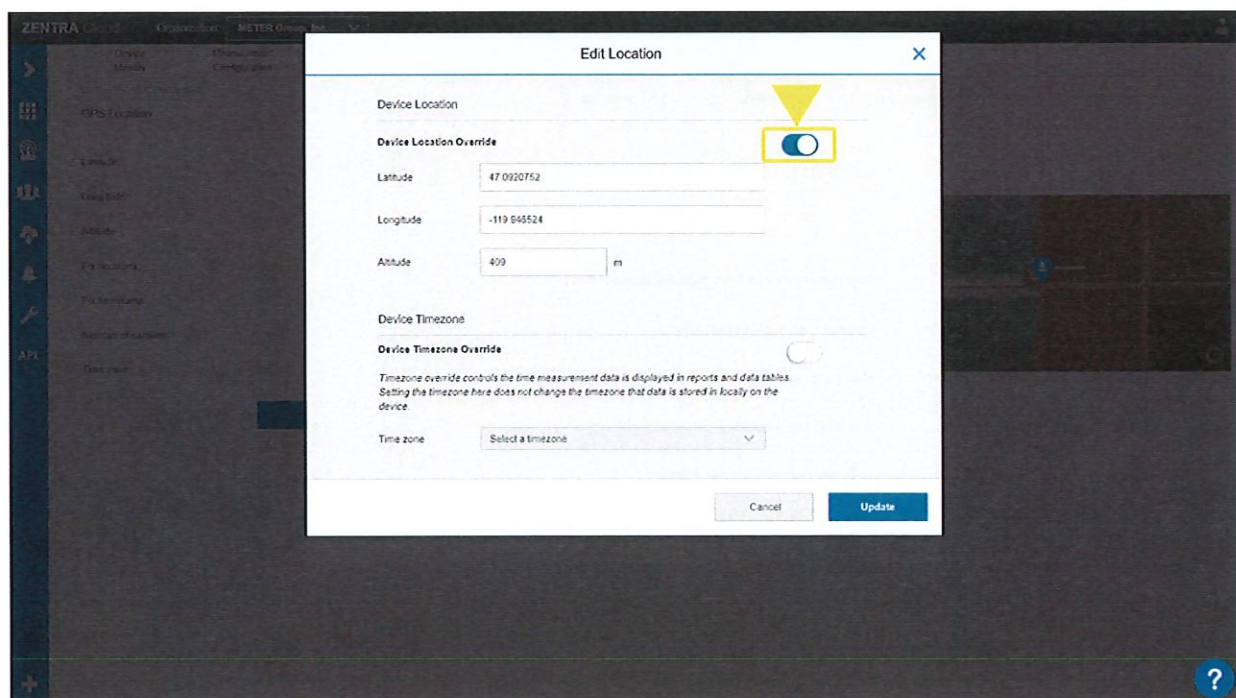
Time zone: UTC-8

[Edit Location](#) [Request Location Update](#)

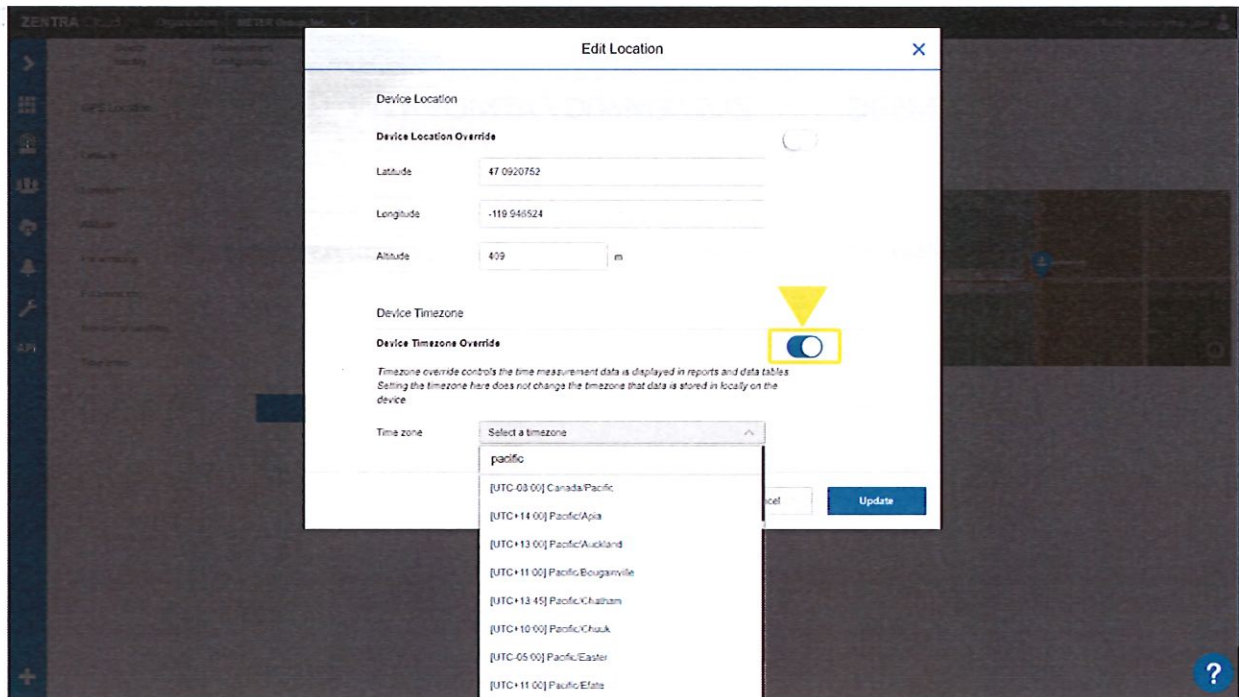
The table below lists by device type the fields that must be manually edited vs. those that are automatically populated.

FEATURE		DEVICE TYPE	
	EM50G	ZL6 / EM60G / ATMOS 41W	ZL6 Basic
Latitude	Manual	Auto	Manual
Longitude	Manual	Auto	Manual
Altitude	Manual	Auto	Manual
Time zone	Auto	Auto	Manual

To edit the **Latitude**, **Longitude**, or **Altitude** toggle the **Device location override** to On. This will allow ZENTRA Cloud to override what is reported for Name and Height by the device.



To edit the **Timezone** toggle the timezone override to on (toggle will turn **blue**) and select or search for the desired timezone from the drop-down menu. Learn more about **OVERRIDE TIMEZONE**.



DEVICE LOGS

The device logs are a record of communication activity and settings changes from the logger. You can filter the list or download a spreadsheet record of these logs.

ZENTRA Cloud

Organization: METER Group, Inc. ...

zc_support@metergroup.com

Device Identity

Measurement Configuration

Communication Settings

GPS Location

Device Logs

06-02109 / 06-02109

Filter: No Filter

Server Timestamp

Log

User

2020/06/20 09:05:36

New device data has been uploaded (packets 8v).

Device

2020/06/20 09:05:36

Uploaded rssi: 19%, Carrier: AT&T

System

2020/06/20 09:05:36

New device data has been uploaded. 7 records were uploaded.

Device

2020/06/20 07:25:46

New device data has been uploaded (packets 8v).

Device

2020/06/20 07:25:46

Uploaded rssi: 19%, Carrier: AT&T

System

2020/06/20 07:25:46

New device data has been uploaded. 7 records were uploaded.

Device

2020/06/20 05:32:00

New device data has been uploaded (packets 8v).

Device

2020/06/20 05:32:00

Uploaded rssi: 23%, Carrier: AT&T

System

2020/06/20 05:32:00

New device data has been uploaded. 8 records were uploaded.

Device